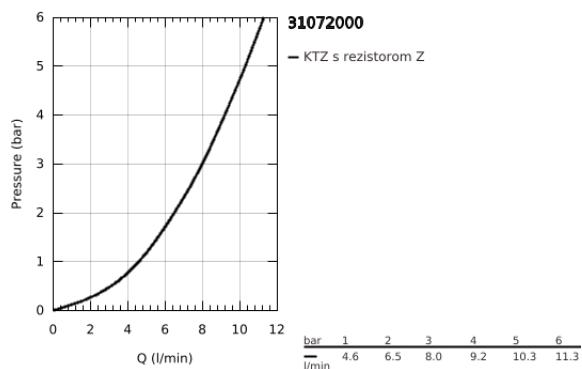
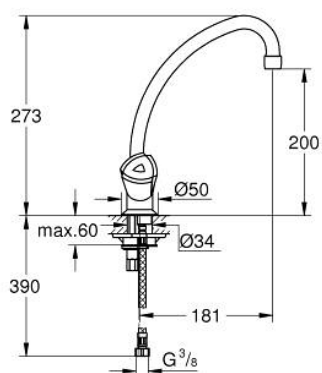


31 072 000 **COSTA L**



POPIS PRODUKTU

- Colour: chrom
- ABS handles
- heat insulated
- povrchová úprava GROHE Long-Life
- vnútorné vodovodné rozvody bez obsahu olova a niklu
- GROHE Long-Life headparts
- mousseur
- swivel tubular spout
- swivel area 360°
- GROHE QuickMount
- flexible connection hoses 3/8"



The diagram illustrates the exploded view of the 3D printer assembly. It shows the main body (1) with a nozzle (1.1) and a filament spool (1.2). A filament guide (2) is shown with a filament (2.1) passing through it. The filament is then fed into the main body (1) where it is extruded through the nozzle (1.1) to form a layer (3.2). The filament guide (2) is also shown with a filament (2.1) passing through it. The filament is then fed into the main body (1) where it is extruded through the nozzle (1.1) to form a layer (3.2).

3.2: O-Krúžok Ø12 x Ø2 (Č. obj. 0128000M)