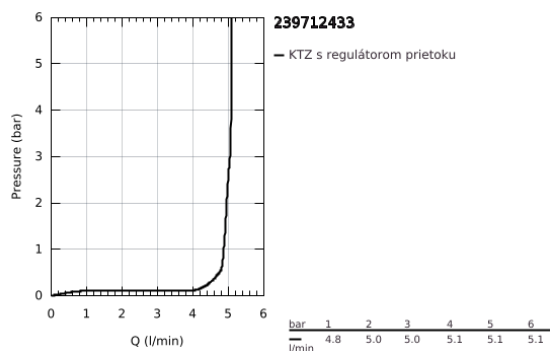
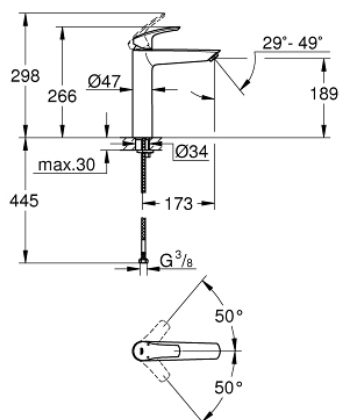


## 23 971 243 3 EUROSMART PÁKOVÁ UMÝVADLOVÁ BATÉRIA, DN 15 XL-SIZE



### POPIS PRODUKTU

- Colour: matte black
- for free-standing basins
- single hole installation
- metal lever
- GROHE SilkMove 28 mm ceramic cartridge
- adjustable flow rate limiter
- with temperature limiter
- GROHE Water Saving technológia pre nízku spotrebu vody a perfektný prietok
- maximum flow rate (at 3 bar): 5 l/min
- nastaviteľný perlátor GROHE AquaGuide
- rýchlopínací montážny systém GROHE FastFixation
- smooth body
- flexible connection hoses
- professional exclusive